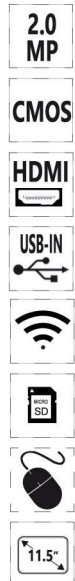
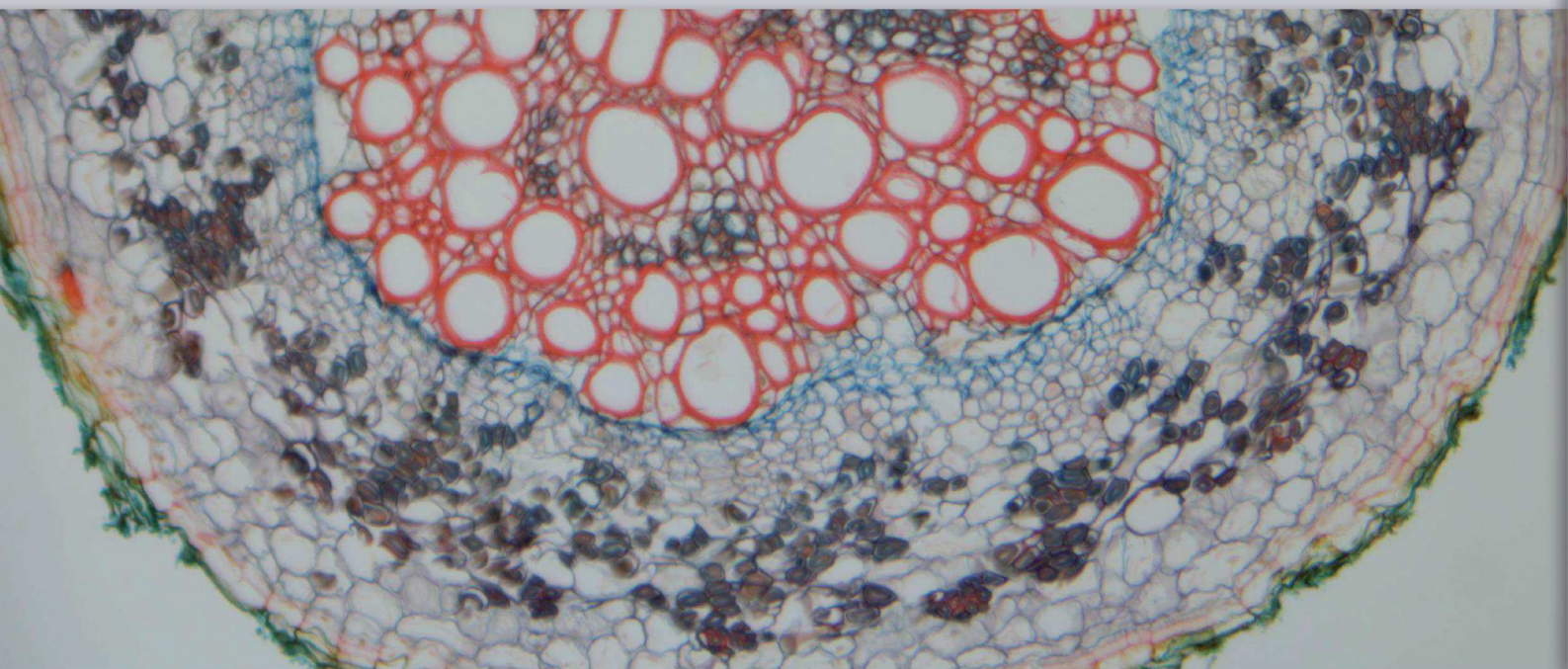


**C-WH5****C-WH5SC**

Smart and user-friendly dual output (HDMI & Wi-Fi) camera with good resolution (up to 5 MP), high-grade SONY CMOS sensor and HDMI/Wi-Fi connection, recommended for routine operations and whenever measurements are required. No software installation is required with image and video capturing on SD card when in HDMI mode. No router or external applications are required thanks to the quick and simple camera connection. At any time, it can be connected to PC and used via the downloadable, free of charge software (Windows), which is always available to enable the latest updates. The compact and elegantly designed housing conceals the very latest in camera technology. Images will be of the highest quality and rich in contrast and detail with the top-class SONY sensors, worldwide recognized, ensuring beautiful true-to-life color and delivering incredibly accurate colors just as you see them. Ideal to be connected to all the trinocular tube of different brands using the focusable C-Mount adapter (to be purchased separately).

Connection into the eyepiece tube or to the trinocular tube of any microscope brand via dedicated adapter (to be purchased separately). Available also as an all-in-one, space saving package including a 11.5" full HD monitor with compact footprint, enabling screen adjustment to ensure correct posture and eliminate fatigue during observation connectable to trinocular tube only via dedicated adapter (to be purchased separately). Wireless mouse, SD card and built-in software included.



C-WH5 & C-WH5SC

- » Simple operation, built-in software
- » Universal connection to any microscope brand
- » Crisp 1080p images and videos
- » Live measurements function
- » Dual output mode (HDMI/WiFi)
- » High frame rate
- » Reliable color fidelity
- » C-mount connection (via dedicated adapter, on any microscope)
- » HDMI/USB cable, Wireless adapter, mouse and SD card included
- » Downloadable, free of charge software
- » OPTIKA ProView for Windows



4 C-WH5 & C-WH5SC

Models:

C-WH5: WH5 camera, 1080p, 5 MP CMOS, USB2.0/Wi-Fi/HDMI, multi-plug

C-WH5SC: WH5 camera, 1080p, 5 MP CMOS, USB2.0/Wi-Fi/HDMI, multi-plug



C-WH5 & C-WH5SC - Specifications

C-WH5 & C-WH5SC	
PC Camera resolution (MP)	5 MP
HDMI Camera resolution (MP)	2 MP
Digital camera resolution	1920 x 1080
USB Signal output	USB 2.0
HDMI Signal output	Yes
Sensor Size	1/1.8"
Sensor technology	CMOS
Sensor type	SONY
Image format	16/9
Pixel size	2.4x2.4 μm
Frame rate (HDMI)	60 fps (1920 x 1080 HDMI); 25fps (1920x1080) (WiFi)
Dynamic range	66 dB
Sensitivity	1120mV at 1/30s
Dark Signal	0.15mV at 1/30s
ADC conversion	8 Bit - 12Bit
Color Depth	1 Bit; 4 Bit; 8 Bit; 24 Bit
Exposure Time	0.03 msec - 918 msec
Binning	1x1
IR filter	380-650 nm (IR-cut filter)
Camera power	DC 12V 1A
C-mount	YES

C-WH5 & C-WH5SC



C-HP Contents:

- HDMI camera
- HDMI cable
- WiFi adapter
- SD card
- Wireless mouse
- Multi-plug external power supply



C-HPSC Contents:

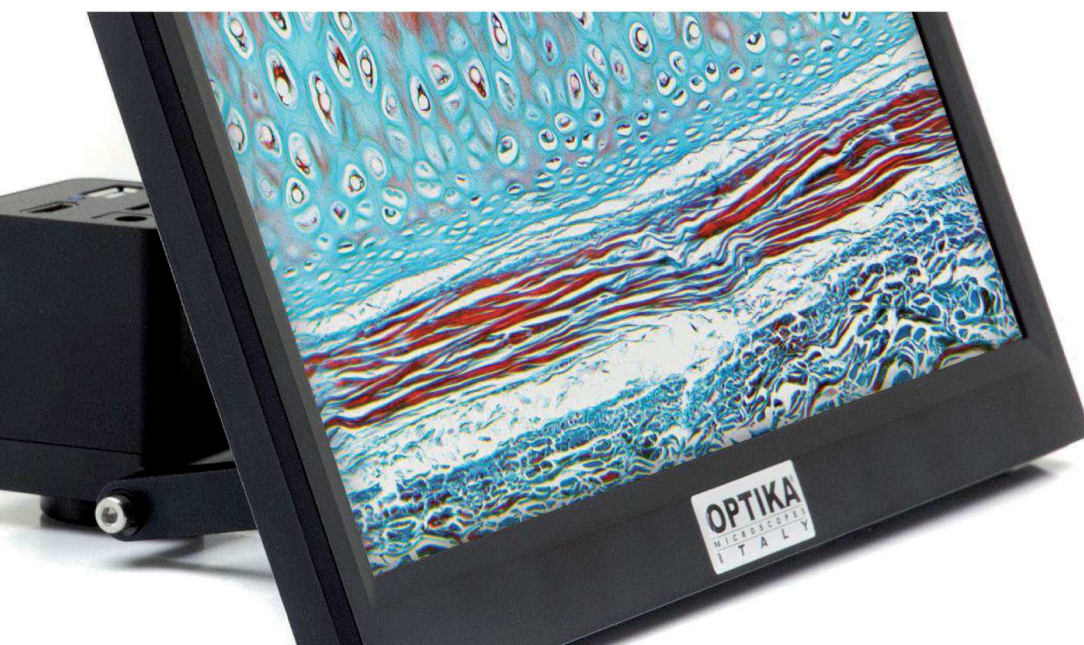
- HDMI camera
- HDMI monitor
- HDMI cable
- WiFi adapter
- SD card
- Wireless mouse
- Multi-plug external power supply (2 pcs.)



C-WH5SC - Monitor Specifications

MONITOR TECHNICAL SPECIFICATIONS (C-WH5SC)

Size	11,5"
Power supply	12V / 2,5A
HDMI cable	50 cm



42 à 48 Bd de Polangis - BP 260 - 94502 Champigny-sur-Marne Cedex
 Tél.: 01 48 83 21 76 - Fax.: 01 48 83 51 01 info@cloup.fr www.cloup.fr